



**REGIONAL SPECIALISED METEOROLOGICAL CENTRE-TROPICAL CYCLONES, NEW DELHI
TROPICAL WEATHER OUTLOOK**

DEMS-RSMC SPECIAL TROPICAL CYCLONES NEW DELHI DATED 15.03.2022

TROPICAL WEATHER OUTLOOK FOR NORTH INDIAN OCEAN (THE BAY OF BENGAL AND ARABIAN SEA) VALID FOR NEXT 120 HOURS ISSUED AT 0600 UTC OF 15.03.2022 BASED ON 0300 UTC OF 15.03.2022.

BAY OF BENGAL:

A CYCLONIC CIRCULATION FORMED OVER CENTRAL PARTS OF SOUTH BAY OF BENGAL (BOB) & ADJOINING EQUATORIAL INDIAN OCEAN (EIO) ON 10TH MARCH, 2022. IT INTENSIFIED OVER EIO & ADJOINING SOUTHEAST (SE) BOB SINCE 13TH MARCH. NOW IT LAY OVER EIO & ADJOINING SOUTHWEST BOB AT 0300 UTC OF TODAY THE 15TH MARCH, 2022. UNDER ITS INFLUENCE, A LOW PRESSURE AREA IS LIKELY TO FORM OVER THE SAME REGION DURING NEXT 24 HOURS

SCATTERED LOW AND MEDIUM CLOUDS WITH EMBEDDED INTENSE TO VERY INTENSE CONVECTION OVER SOUTH BAY OF BENGAL SOUTH OF LAT 11.0N ADJOINING EQUATORIAL INDIAN OCEAN & CENTRAL ANDAMAN SEA

PROBABILITY OF CYCLOGENESIS (FORMATION OF DEPRESSION) DURING NEXT 120 HRS:

24 HOURS	24-48 HOURS	48-72 HOURS	72-96 HOURS	96-120 HOURS
NIL	NIL	NIL	NIL	NIL

ARABIAN SEA:

SCATTERED LOW AND MEDIUM CLOUDS WITH EMBEDDED ISOLATED WEAK CONVECTION OVER SOUTH ARABIAN SEA & COMORIN

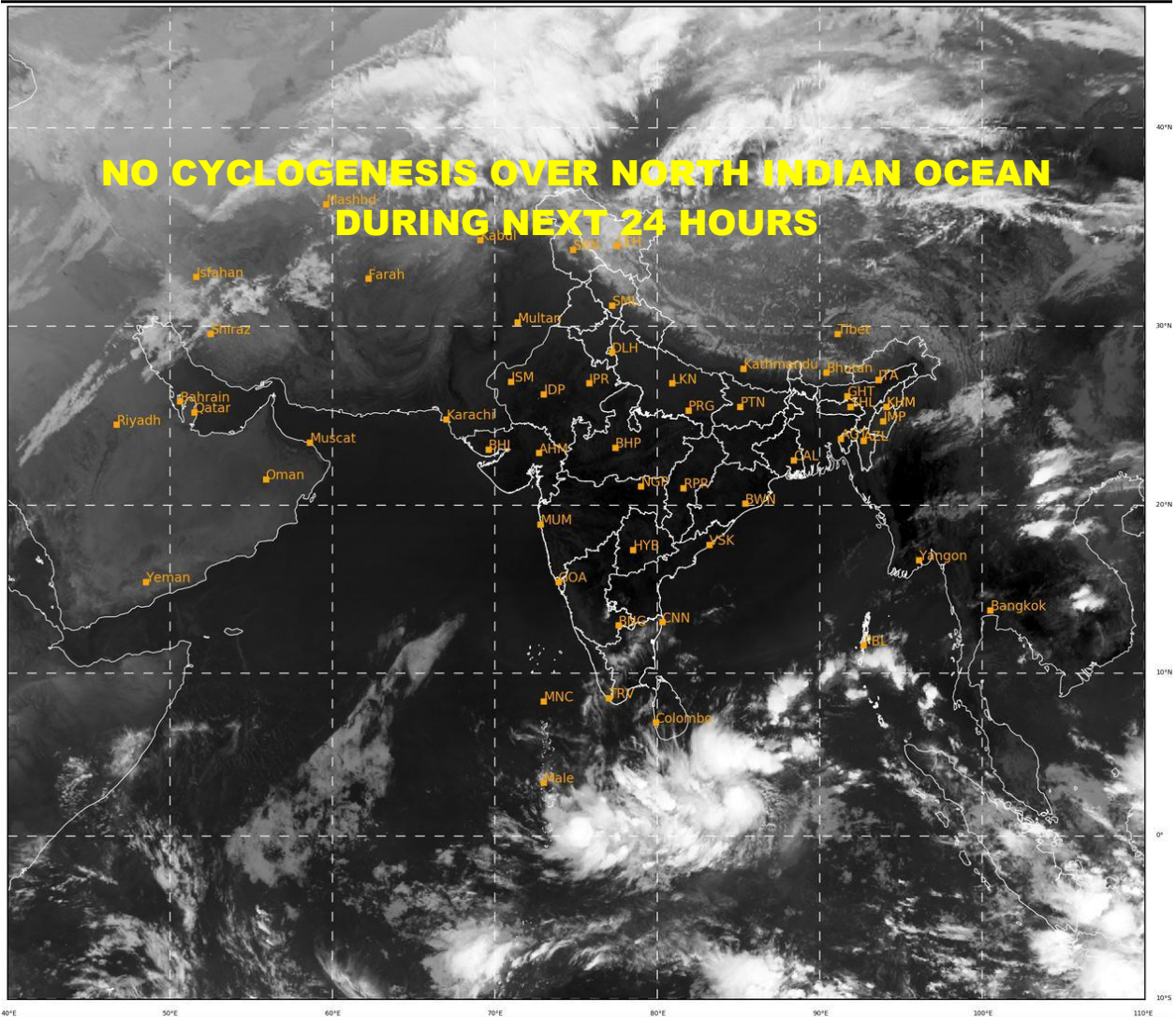
PROBABILITY OF CYCLOGENESIS (FORMATION OF DEPRESSION) DURING NEXT 120 HRS:

24 HOURS	24-48 HOURS	48-72 HOURS	72-96 HOURS	96-120 HOURS
NIL	NIL	NIL	NIL	NIL

REMARKS:NIL.

SAT : INSAT-3D IMG
IMG_TIR1 10.8 um
L1C Mercator

15-03-2022/(0300 to 0327) GMT
15-03-2022/(0830 to 0857) IST



436

937

IMD, DELHI

PROBABILITY OF CYCLOGENESIS (FORMATION OF DEPRESSION):NIL: 0%, LOW: 1-33%, MODERATE: 34-66% AND HIGH: 67-100% This is a guidance Bulletin for the WMO/ESCAP Panel Member countries,. Please visit respective National websites for Country specific Bulletins